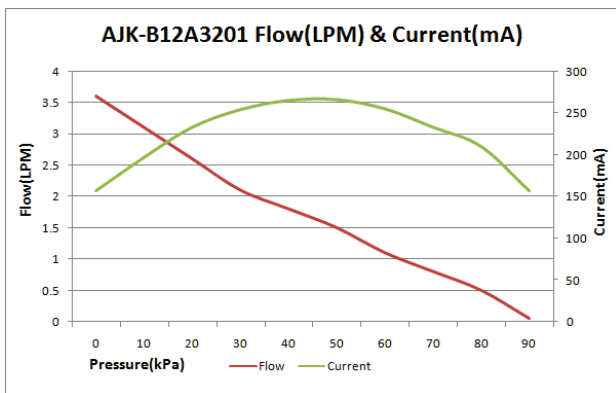
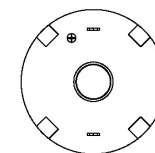
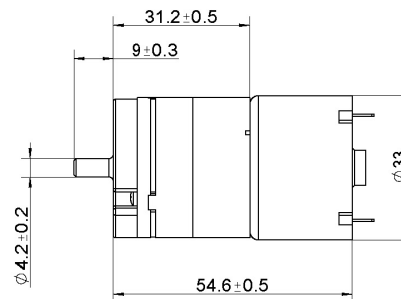
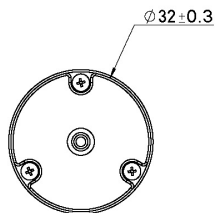
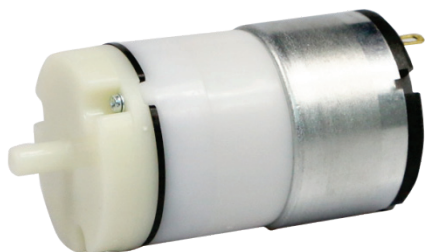


Pump

12V DC 3L/min



Product Specification

Rated Voltage	Rated Current	Free Flow	Pressure	Noise	Load
DC 6.0 V	< 500 mA	> 3.0 LPM	> 80 KPa	< 60 dB	Air
DC 12.0 V	< 300 mA	> 3.0 LPM	> 80 KPa	< 60 dB	Air
DC 24.0 V	< 200 mA	> 3.0 LPM	> 80 KPa	< 60 dB	Air